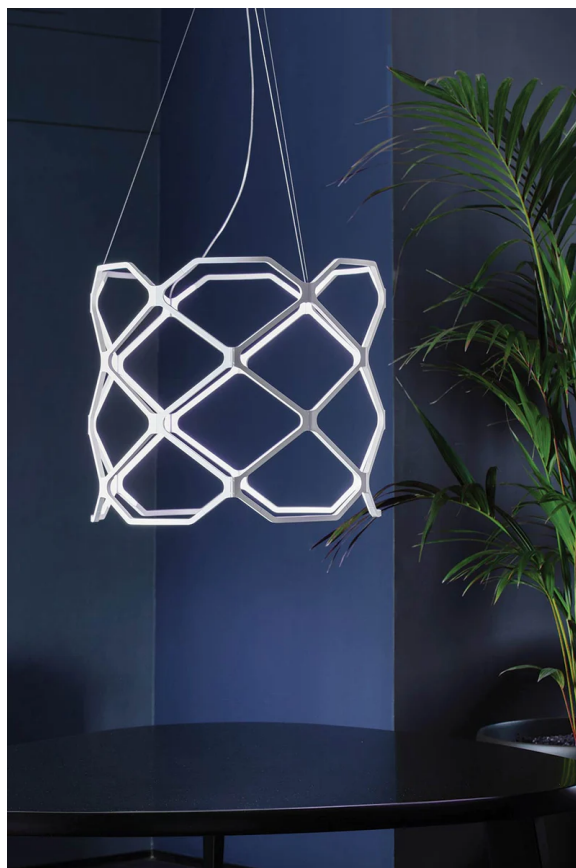


## Titia Pendant

by Arihiro Miyake

Titia is a suspended LED luminaire composed of identical injection-moulded modules in thermoplastic polymer equipped with quick couplings for easy assembly. It can be suspended on its own or as a row of pendants to create a unique design. Described as a suspended swirl of light, Titia is inspired by the spirit of Christmas garlands and wooden merry-go-rounds. Available in black or white finish.



<b>Designer</b>	Arihiro Miyake
<b>Supplier</b>	Nemo
<b>Country</b>	Italy
<b>SKU</b>	NE S/TITIA
<b>Warranty</b>	2yr commercial / 3yr residential
<b>Finish Options</b>	Black, White

### Product Dimensions

