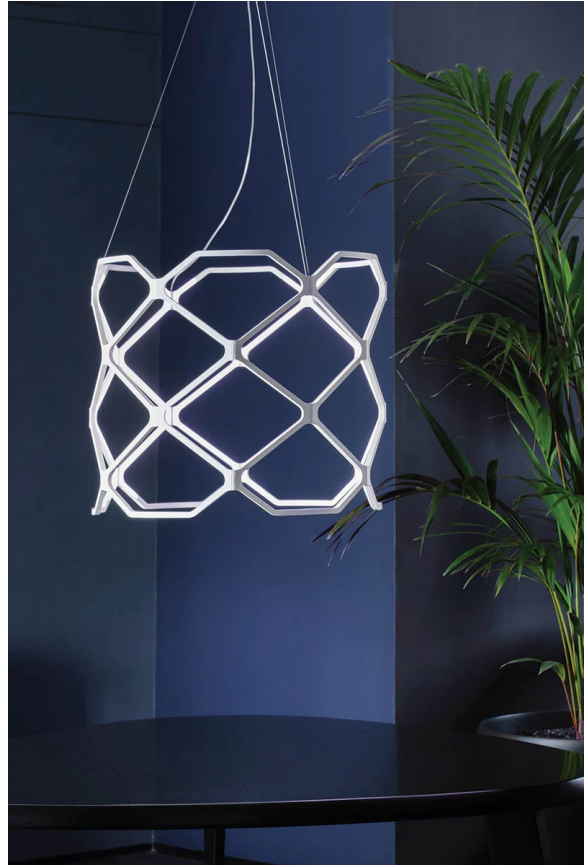


## Titia Pendant

by Arihiro Miyake

Titia is a suspended LED luminaire composed of identical injection-moulded modules in thermoplastic polymer equipped with quick couplings for easy assembly. It can be suspended on its own or as a row of pendants to create a unique design. Described as a suspended swirl of light, Titia is inspired by the spirit of Christmas garlands and wooden merry-go-rounds. Available in black or white finish.



|                       |                                  |
|-----------------------|----------------------------------|
| <b>Designer</b>       | Arihiro Miyake                   |
| <b>Supplier</b>       | Nemo                             |
| <b>Country</b>        | Italy                            |
| <b>SKU</b>            | NE S/TITIA                       |
| <b>Warranty</b>       | 2yr commercial / 3yr residential |
| <b>Finish Options</b> | Black, White                     |

### Product Dimensions

