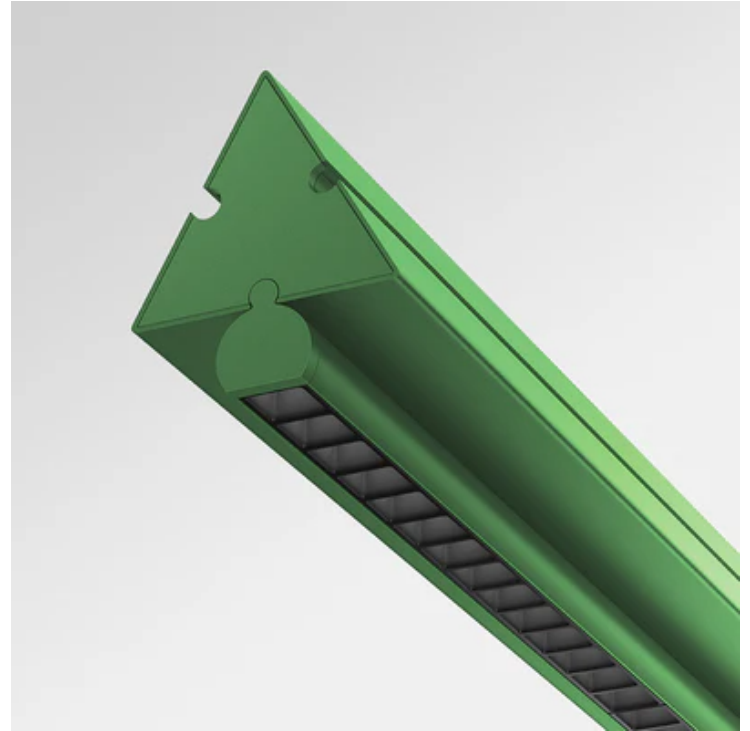


ART 1854010A

Dreispitz Horizontal Pendant

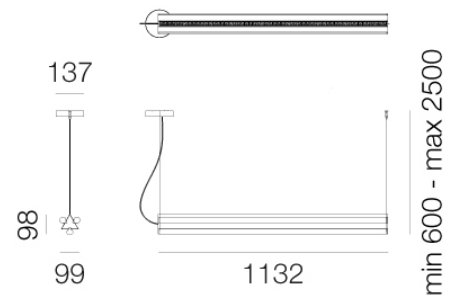
by Herzog & de Meuron

Designed by Herzog & de Meuron for Artemide, the Dreispitz Horizontal Pendant is a double-emission luminaire built around a triangular central core that houses the electronic components, with tubular diffusers mounted to its flat sides. The geometry generates soft, uniform light distribution, with directional versions available for tasks requiring more focused output. Its modular composition allows individual units to be combined into horizontal and vertical arrangements, suiting office, hospitality, and common-area applications. Constructed from partially recycled, easily dismantled materials, Dreispitz offers a strong energy balance through efficient, dynamic emission management via the Artemide App. Available in black, green, or silver finishes, in 120cm and 150cm lengths, across four emission configurations. Part of the Artemide Architectural Indoor collection.



Designer	Herzog & de Meuron
Supplier	Artemide
Country	Italy
SKU	ART 1854010A
Size	120
Finish	Green
Version	1 Controlled

Product Dimensions



Materials	Recycled materials	Source	1 x LED 19W	Colour Temp	3000K
Output	1860lm	CRI	90	Emission	1 direct (controlled)
IP Rating	IP20	Dimming	Push/DALI		