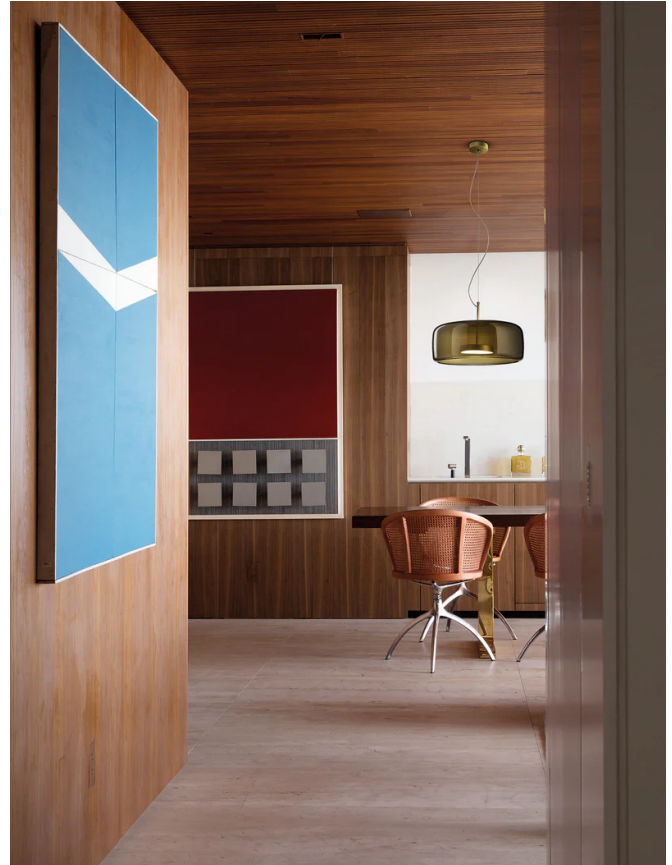


VI S/JUBE/S/BLACK/GREEN

Jube 1 Pendant

by Favaretto&Partners

Essential, sinuous and delicate, Jube was born from the union of two mouth blown glasses that, once assembled together, create an overlapping, ton sur ton effect with retro charm. Thanks to a powerful waterjet which perforates glass with holes of a very large diameter, the fusion of the glasses is perfectly integrated, allowing two glasses look like a single piece. The LED light source produces a widespread and powerful light. Available in various finish combinations in large, small or mini size.



Designer	Favaretto&Partners
Supplier	Vistosi
Country	Italy
SKU	VI S/JUBE/S/BLACK/GREEN
Glass Finish	Green
Metal Finish	Black
Size	S

Product Dimensions



Weight	2kg	Materials	Blown Glass	Source	8.5W LED
Colour Temp	3000K	Output	1200lm	CRI	>80
IP Rating	IP20	Dimming	PHASE		