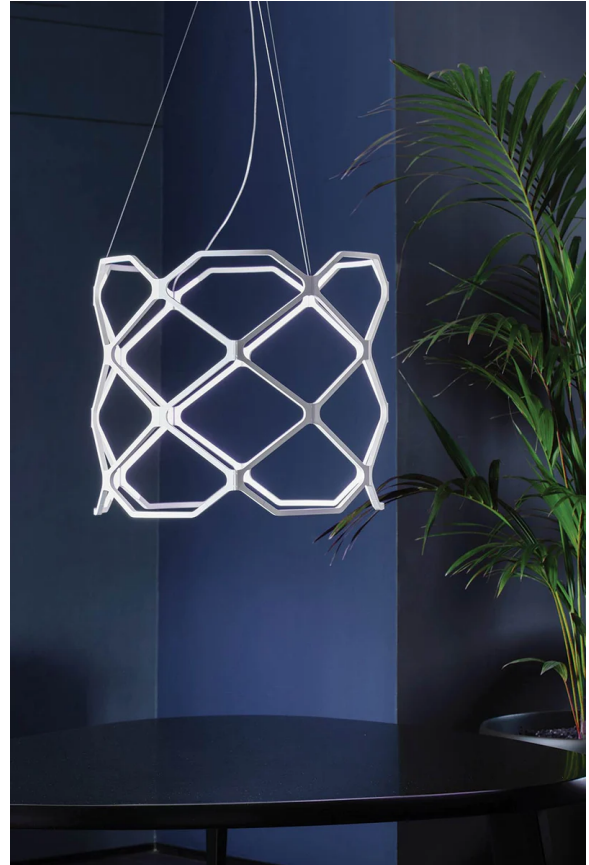


NE S/TITIA/2700K/1-10v/WHITE

Titia Pendant

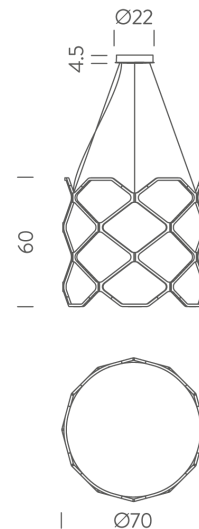
by Arihiro Miyake

Titia is a suspended LED luminaire composed of identical injection-moulded modules in thermoplastic polymer equipped with quick couplings for easy assembly. It can be suspended on its own or as a row of pendants to create a unique design. Described as a suspended swirl of light, Titia is inspired by the spirit of Christmas garlands and wooden merry-go-rounds. Available in black or white finish.



Designer	Arihiro Miyake
Supplier	Nemo
Country	Italy
SKU	NE S/TITIA/2700K/1-10v/WHITE
Finish	White

Product Dimensions



Weight	4.8kg	Materials	PC + ABS	Source	90W LED
Colour Temp	2700K	Output	3850lm	CRI	85
Emission	diffused	Dimming	1-10v	Notes	3m drop