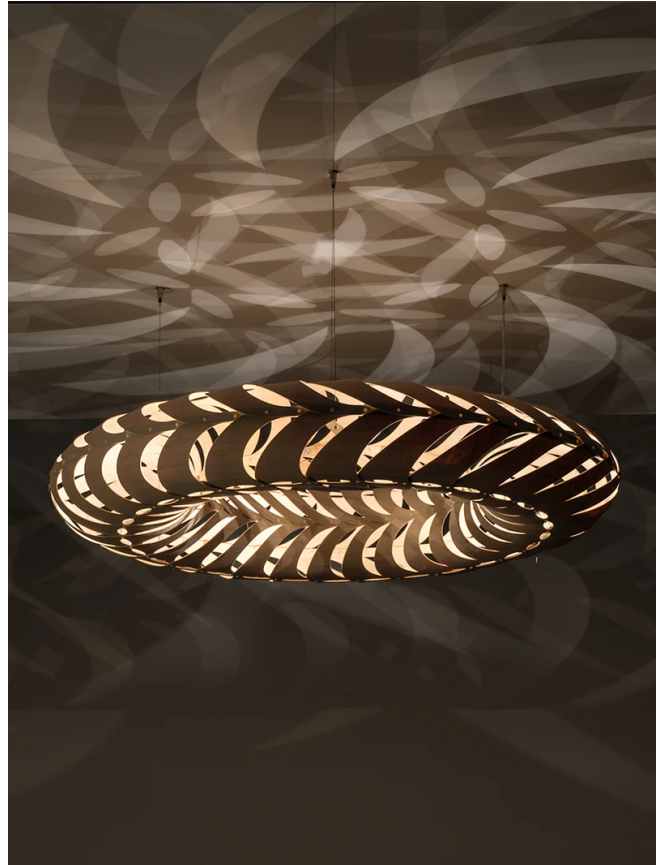


DT MARU/SMALL/WHITE/WHITE

## Maru Pendant

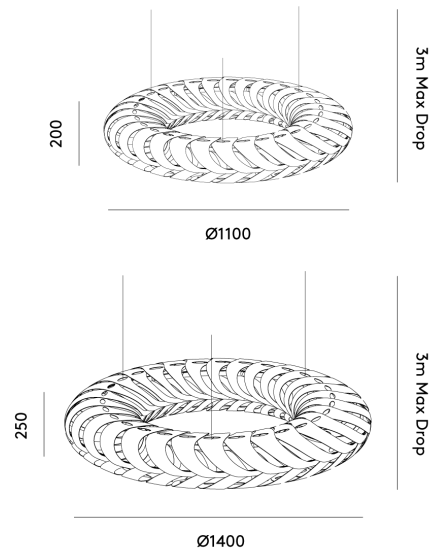
by David Trubridge

Maru is the newest concept luminaire from David Trubridge. Made from 60 identical components that clip together to create an elliptical form. The name Maru is found in both New Zealand Maori and Japanese languages, with references to the cycle of life. Maru casts complex patterns on neighboring surfaces, creating a unique ambiance.



<b>Designer</b>	David Trubridge
<b>Supplier</b>	David Trubridge
<b>Country</b>	New Zealand
<b>SKU</b>	DT MARU/SMALL/WHITE/WHITE
<b>Finish</b>	White 2 Sides
<b>Size</b>	Small

### Product Dimensions



<b>Weight</b>	5.4kg	<b>Materials</b>	Bamboo	<b>Source</b>	15.6W LED
<b>Colour Temp</b>	2700K	<b>Dimming</b>	PHASE		